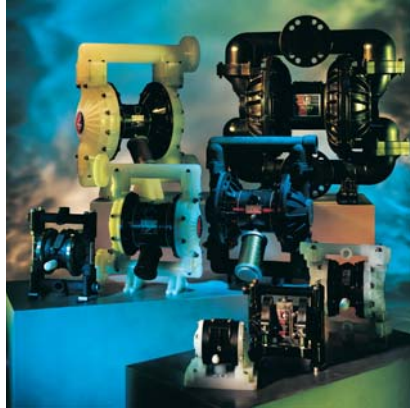


# GENMAR

Sanayi Ürünleri Pazarlama A.Ş.





Founded in 1986 GENMAR is a “Solutions Partner” to industrial end users providing them with products, services and solutions in fluid handling, tools, material handling and industry specific equipment.

GENMAR’s success is based on its commitment, experienced staff, unparalleled quality of customer service, and innovative engineered solutions.

GENMAR is the preferred partner of choice by its customers, supplying them with products from manufacturers who are global leaders in their businesses. With these products, services and

solutions Genmar assists in enhancing customers’ productivity, efficiency and operations in a diverse range of industries such as the Motor Vehicle and Components, White Goods, Electronics, Foundry, Chemical, Machine Production, Food industries along with Ship Building, Petrochemical, Oil Refining, and Energy sectors.



**GENMAR**



# GENMAR

- 1 FLUID HANDLING & SURFACE PREPARATION EQUIPMENT
- 2 INDUSTRIAL SOLUTIONS
- 3 ERGONOMIC HANDLING EQUIPMENT
- 4 INDUSTRY SPECIFIC SOLUTIONS
- 5 PROCESS EQUIPMENT
- 6 ENGINEERED SOLUTIONS
- 7 SERVICE CENTER
- 8 THE GENMAR TEAM
- 9 REFERENCES



### FINISHING

GENMAR has been providing solutions for single and plural component finishing and protective coating applications in automotive, automotive components, electronics, white goods, chemical, wood, metal goods, ceramic, glass and general machinery industries with products from its business partners Graco and Anest Iwata.

### SEALANT & ADHESIVES

For dispensing metering and measuring applications in polyurethane, silicone, epoxy, butyl rubber, EVA, PSA, PVC, and acrylic based materials, GENMAR provides a wide range of custom engineered solutions with equipment from our business partners Graco and Liquid Control.

### FLUID TRANSFER

Graco Husky air-operated diaphragm pumps are designed to transfer a variety of viscous and impure liquids. They come in a large selection of wetted parts including aluminum, stainless steel, ductile iron, polypropylene, grounding acetal, Kynar (PVDF) body and acetal, polypropylene, Buna-H, Nylrel, Santopren, Teflon, Viton, Geolast ball valves and diaphragms to suit almost any fluid.

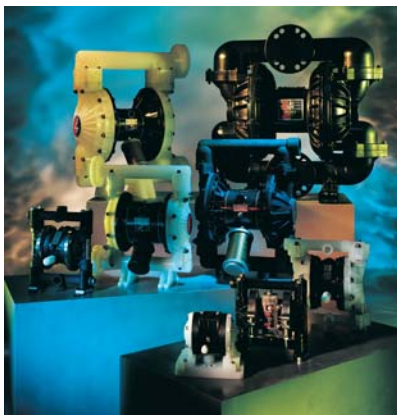
The Husky™ line features 1/4", 3/8", 1/2", 3/4", 1", 1-1/2", 2" and 3" sizes with flow rates from 19 to 1040 l/min. These pumps are also the ideal choice for operating in ex-proof environments.

We provide a wide range of diaphragm and piston pumps, spray packages, plural component equipment - for handling a wide variety of fluids from low to high viscosity - manufactured by our business partners who are global leaders.

GENMAR, coupling these products with extensive technical expertise offers trustworthy turnkey systems that meet industrial and commercial demands.

## FLUID HANDLING & SURFACE PREPARATION EQUIPMENT

1



### LUBRICATION

Products to dispense, meter and transfer oils, grease, hydraulic fluids, for automotive service stations and various other industrial applications are supplied from our business partner Graco.

### ACCESSORIES

A wide range of accessories for paint, mastic, adhesive, fluid transfer and lubrication applications are available to ensure ease of use and reduction of downtime.

### MOLECULAR FILTRATION

Filtration membranes and processes for automotive, mechanical and all environment applications (degreasing, cataphoresis, waste water treatment facilities). Orelis is Genmar's business partner for this product range.



OUR BUSINESS PARTNERS:





### ASSEMBLY TOOLS & SYSTEMS

Joining components in today's industrial environment is much more than applying a wrench to a bolt. It requires, accuracy, process control, data output and feedback to the operator. GENMAR has been combining its know-how and experience with products sourced from its partners to provide solutions and services that maximize productivity in any assembly line or area.

Air, electric and pulse fastening tools, DC electric fastening systems, high-torque installation tools, riveters, drills and tappers are among the products offered.



### INDUSTRIAL TOOLS

Ingersoll-Rand industrial production class impact tools deliver rugged reliability and power whilst offering the best power-to-weight ratios available on the market. Models ranging between 3/8" and 2-1/2" comprise the most powerful impact tools in the market.

Pneumatic breakers, chisels, saws, hammers, vibrators, and large drills are other products that meet various requirements.

Surface preparation tools such as Ingersoll-Rand Revolution, G-Line, Pro and Ergo Line grinders, engraving pens and small grinders, scalers, and sanders are products that complete the range.

## 2 INDUSTRIAL SOLUTIONS

Genmar provides solutions virtually in all industrial markets. High precision fastening tools, industrial tools, torque control and management systems air motors lifting equipment and accessories are products supplied from our business partners.

Our customers know they can count on Genmar for unmatched solutions regarding productivity and reliability.



### AIR STARTERS

Ingersoll-Rand air starters are flexible, efficient alternatives to electric ones and are perfect for a wide range of industrial, marine, and automotive applications.

With over 100 years of engineering and manufacturing leadership, Ingersoll-Rand is the expert in the technical development of air starting systems. There are well over 200 models of air starters with an extensive range of options.

### AIR MOTORS

Ingersoll-Rand air motors - perfect for a wide range of industrial applications - are flexible and efficient alternatives to electric ones. They are safe, clean, easy to control and require low maintenance. There are more than 200 models ranging from 0,10 to 30 HP.

### AIR HOISTS & WINCHES

Ingersoll-Rand air hoists and winches are safe, efficient and operate at high speeds. Capacities range from 1/8 through 100 tons. They are widely used in large variety of applications in industry ranging from automotive to foundries, mining, shipyards, power plants, cement plants, and refineries.

OUR BUSINESS PARTNERS:





### ACCESSORIES

Various accessories for air tools and the air line such as spring balancers, hoses, impact sockets, bits and FRL's are offered from the product range of Ingersoll-Rand and other manufacturers.

### AUTOMOTIVE SERVICE TOOLS

Ingersoll-Rand automotive series pneumatic tools are preferred in all markets for repair and maintenance applications. Due to their power, durability and ergonomic design they are the number one choice in the automotive aftermarket.



### BATTERY POWERED TOOLS

Ingersoll-Rand IQV line battery powered tools are popular particularly in the repair and maintenance applications because of their robustness, ergonomic design and power.

### TORQUE MANAGEMENT

GENMAR delivers turn-key solutions with products from Crane Electronics, Norbar and Torqueleader for torque measurement and torque management needs.

The products cover application requirements before, during and after the assembly operation. Additionally hardware and software solutions for tool capability, process capability and control assessment and process verification are also available.

Torque applying screwdrivers and wrenches, hand and powered multipliers, torque measurement and calibration analysers, ultrasonic bolt measurement equipment, static and rotary transducers, readouts and bottle torque testers are products that complete the range.





### INTELLIGENT HANDLING SYSTEMS

The new generation INDEVA are an evolution of the traditional manipulators and belong to the new industrial manipulator class known as Intelligent Assist Devices. Compared to traditional manipulators the new INDEVA allow operators to manipulate loads with greater speed and precision as if it were an extension of the human arm.

An INDEVA will help improve productivity together with ergonomics and safety. It is therefore the perfect solution for quick, repetitive motions and slow, precise load placements.

### PNEUMATIC & ELECTRICAL BALANCERS

Ingersoll-Rand Pneumatic Balancers allow users to lift and “float” the load, allowing for precise manual movement and placement without the impact effect.

Intelligent Lifting Devices eliminate the need for up and down controls by sensing user force input and translating it to precise vertical motion. These devices are ideal for applications where hands-on load control is required.

3

## ERGONOMIC HANDLING EQUIPMENT

GENMAR has been supplying turnkey pick and place handling solutions from Ingersoll-Rand and Indeva assisting in a productive ergonomic work place thus empowering individuals to work more comfortably and effectively.



### ALUMINUM RAILS

Genmar offers enclosed rail profiles in aluminum and steel from Ingersoll-Rand. The enclosed rail design reduces the accumulation of dirt and grime on the internal running surfaces, thus reducing rolling effort.

All the accessories, such as hanger kits, end trucks, trolleys, safety cables, and end stops, are provided to construct a complete ceiling supported or freestanding workstation crane system.

### MANIPULATORS

Liftronic Air, featuring pneumatic lifting force and electronic control are the latest generation industrial manipulators of the INDEVA family. They combine the strength of traditional pneumatic manipulators with the intelligence of the INDEVA.

The lifting power is generated by compressed air while all controls are electronic.

They are suitable for handling offset loads. Compared to traditional pneumatically controlled manipulators Liftronic Air offers important advantages which help improve safety, ergonomics and productivity.

OUR BUSINESS PARTNERS:







### FILLING EQUIPMENT

Cinetic Filling designs, manufactures, and installs automatically controlled filling equipment for air conditioning, brake and power steering hydraulic, and windshield water for assembly lines in the automobile industry. Cinetic Filling is one of the worldwide leaders in this market, with more than 3,000 installations throughout the world and 30 years of experience. Based on this experience and via various product ranges, engineered solutions that can be fully adapted to every clients' various production rates and constraints, can be made available.

GENMAR supply and service automatic filling equipment along with stud welding systems to the Motor Vehicles Industry.

INDUSTRY  
SPECIFIC SOLUTIONS:  
AUTOMOTIVE

4



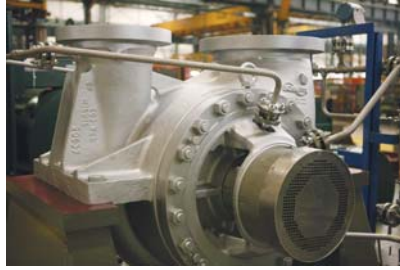
### STUD WELDING SYSTEMS

Emhart Tucker pioneered the concept of using arc welding equipment as a means to fasten components on sheet metal without the need for holes. This system known as "The No-Hole Fastening System" is widely used in the automotive industry and comprised of stud welding equipment, welded stud and an engineered plastic clip that attaches to the stud.

The result is extraordinarily strong attachments that will never be a source of corrosion or fastening system failure. Modular, microprocessor controlled stud welding systems allow customized equipment precisely matched to specific customer requirements.

OUR BUSINESS PARTNERS:





### **PUMPS**

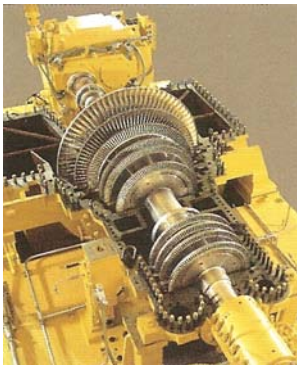
GENMAR is the agent for Flowserve Pump Division in Turkey. Flowserve is the world's largest supplier of industrial, engineered, and special purpose pumps and systems. The division includes world premier brands such as Worthington, Ingersoll-Rand, Byron Jackson, Pacific, Durco, Jeumont Schneider, Pleuger, Ingersoll-Dresser Pumps (IDP) and United.

Flowserve is recognized throughout the process industry as a leader in the supply of ASME (ANSI) and ISO alloy and nonmetallic pumps for corrosive, toxic and other severe chemical duties. In addition to a wide range of heavy-duty pumps for oil and gas production and pipeline services the company offers the world's most complete line of API 610 pumps for every hydrocarbon processing application. Horizontal and vertical pumps with specialized designs can also be found in water resources, combined cycle, fossil fuel and nuclear power industries.

5

## PROCESS EQUIPMENT

GENMAR has been providing solutions in power generation, petroleum refining, oil and gas production, pipeline, iron and steel and chemical industries as the representative of world class manufacturers.



### **PROCESS COMPRESSORS & STEAM TURBINES**

Dresser-Rand is among the biggest rotating equipment producers in the world. For more than 100 years through its centrifugal and piston compressors, steam turbines and control systems Dresser-Rand is positioned to deliver complete package solutions from initial concept to equipment retirement for the worldwide oil and gas, chemical, petrochemical, and process industries.

GENMAR is the agent for all divisions in Turkey.

OUR BUSINESS PARTNERS:

**DRESSER-RAND**

**FLOWERVE**  
Pump Division



GENMAR

GENMAR

## ENGINEERED SOLUTIONS

### A SELECTION OF ASSEMBLY APPLICATIONS

- Multi-spindle fastening of concrete weights for washing machines
- Multi-spindle fastening of motor studs for washing machine
- Assembly of transportation bolts for washing machines
- Assembly of seatbelts and seat height adjustment mechanism
- Assembly of spare tire strap
- Assembly of rear axle
- Engine Assembly

We offer complete solutions coupling standard products with our engineering knowledge to design systems focused on helping customers increase productivity, reduce costs and improve product quality.



### A SELECTION OF ERGONOMIC HANDLING APPLICATIONS

- Handling of LCD TV's
- Axle handling
- Windscreen handling
- Handling of the welded door
- Seat handling
- Handling of flywheel cover



### **A SELECTION OF TORQUE MEASUREMENT & DATA COLLECTION APPLICATIONS**

- Capability control of assembly tools by simulating real fasteners in production
- Periodic confirmation and real time monitoring of torque values by measuring them dynamically during production
- Regular control and data collection of the safety joints in the production line

### **A SELECTION OF FLUID HANDLING APPLICATIONS**

- Complete spraying system to simulate line application of PVC underbody coating
- Spray system for the application of 2K PU based material with 4-5 min cure time for underbody coating of buses
- Application of Water based paint in car plants
- Automatic application on a conveyor line for painting TV frames





7

## SERVICE CENTER

Genmar provides field maintenance, installation, training, and repair for all products and engineered systems offered.

The team comprising factory trained engineers and technicians develop their knowledge and skills, via continuous training.

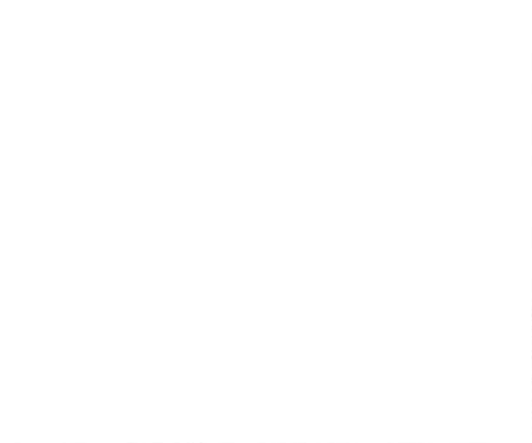






8

THE GENMAR TEAM







## AUTOMOTIVE

- BMC Sanayi ve Ticaret A.Ş.
- B.Plas Bursa Plastik Sanayi ve Ticaret A.Ş.
- Ford Otomotiv Sanayi A.Ş.
- Grammer Koltuk Sistemleri A.Ş.
- Hema Endüstri A.Ş. ve Grup Şirketleri
- Honda Türkiye A.Ş.
- Hyundai Assan Otomotiv Sanayi A.Ş.
- Karsan Otomotiv Sanayi A.Ş.
- Man Türkiye A.Ş.
- Martur Sünger ve Koltuk San. A.Ş.
- Mercedes Benz Türk A.Ş.
- Otokar Otobüs Karoseri Sanayi A.Ş.
- Oyak Renault Otomobil Fabrikaları A.Ş.
- Tofaş T. Oto Fabrikaları A.Ş.
- Toyota Otomotiv San. Türkiye A.Ş.
- Türk Traktör A.Ş.

## WHITE GOODS & ELECTRONICS

- ABB Elektrik Sanayi A.Ş.
- Arçelik A.Ş. Grup Şirketleri
- BSH Ev Aletleri Sanayi ve Tic. A.Ş.
- Legrand Elektrik A.Ş.
- Schneider Elektrik A.Ş.
- Türk Demir Döküm Fabrikaları A.Ş.
- Vestel Şirketler Grubu

## OIL REFINERIES / PETROCHEMICAL / ENERGY

- Botaş
- Ereğli Demir Çelik
- Petkim
- TPAO
- Tüpraş

## REFERENCES

## CHEMICALS

- Akzo Nobel Boya A.Ş.
- Bekaert İzmit Çelik Kord Sanayi ve Ticaret A.Ş.
- Betek Boya ve Kimya Sanayi A.Ş.
- Brisa Bridgestone Sabancı Lastik Sanayi Tic. A.Ş.
- Sika Yapı Kimyasalları A.Ş.
- Türk Henkel Kimya Sanayi A.Ş.

## FABRICATION / MANUFACTURING

- Akdöküm Sanayi A.Ş.
- Aydöküm Makine Sanayi A.Ş.
- Componenta Dökümcülük A.Ş.
- Çemtaş Çelik Makine Sanayi ve Ticaret A.Ş.
- Çimtaş A.Ş.
- Adarad Döküm Ürünleri Sınai ve Ticaret A.Ş.
- Erkunt Döküm ve Makine Sanayi A.Ş.
- Gemak İnşaat Sanayi ve Ticaret A.Ş.



**GENMAR**

**GENMAR**

GENMAR Sanayi Ürünleri  
Pazarlama A.Ş.  
Bayman Caddesi  
No.1 Oto Sanayi 4. Levent  
34396 İstanbul - Türkiye

İstanbul Head Office:  
Phone: +90212 282 2880  
Fax: +90212 280 7074  
[www.genmar.com.tr](http://www.genmar.com.tr)

İzmir Office:  
GSM +90533 512 6835  
GSM +90533 456 6274

Bursa Contact:  
GSM +90530 522 7199